

MF 6845 combine harvester

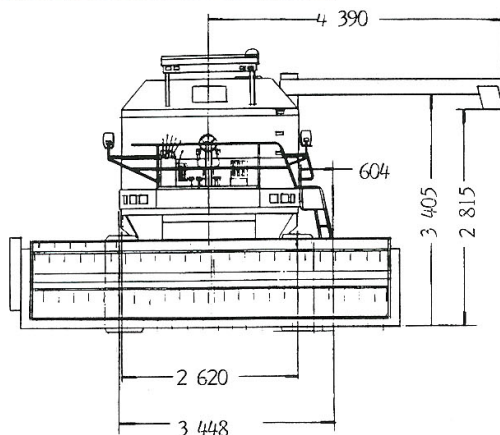


6845

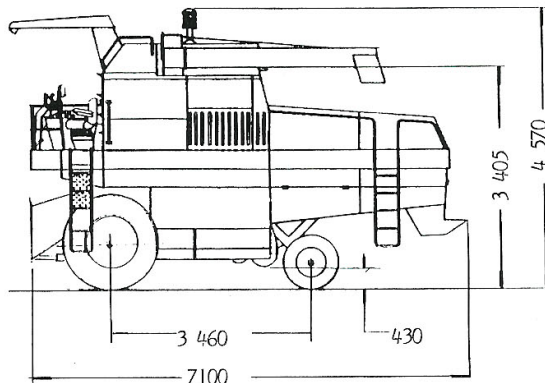
- Choice between 120 and 145 HP (DIN) Perkins engines for high and economical performance in all crops and fields.
- Double "v" spiral action table auger feathering fingers for even feed and high performance.
- Optional A.T.H.C. on flexible floating cutter bar tables for improved output in soya beans.
- 116 cm wide "high inertia" cast iron cylinder for high and consistent output in the toughest conditions.
- Large shake shoe and 5 steps aggressive straw walkers for maximum output and minimum grain loss.
- Big grain tank with "turret type" unloader for fast and efficient unloading into high sided trailers.



SPECIFICATIONS



DIMENSIONS - mm



6845 combine harvester

ENGINE	
Type	A6.354.4
-Optional	AT6.354.4 (Turbo)
Cylinder	6
Power-rpm	120 DIN (89 kw)
-Optional	145 DIN (108) at 2400
Fuel tank-Liters	240

THRESHING	
Cylinder:	
Type	"Hi-Inertia" rasp bar
Diameter-mm	560
Width-mm	1160
Weight-kg	244
Speed range-rpm-continuous	430 to 1250
Drive	"Maxi-torque" Hydraulic

Concave:	
Type	Bars and wires
Angle of wrap-degrees	110°
Area-cm2	7800

SEPARATION	
Straw Walkers:	
Number	5
Length-m	4,10
Area-m2	4,80
Type	Open bottom with pan beneath

CLEANING	
Total sieves area-m2	4,0

GRAIN TANK	
Capacity-Liters	4500
Unloading time-sec	90
Unloader	"Turret" type
Grain tank cover	Standard

TRANSMISSION	
Type-3 speed-mechanical	"Constant mesh"
Speed range-km/h	1,60-20,00

TYRES	
Grain:	
Front	23.1x26R1 10 pr
Rear	10.5x18 6 pr
Rice:	
Front	23.1x26R2 10 pr
Rear	14.9x24R1 6 pr

TABLES	
Common specifications for flexible cutterbar and rigid cutting tables:	
Reel drive	Hydrostatic
Reel speed range	0 - 60
No. of reel bats	6
Reel fore and aft adjustment	Mechanic
Table floatation	Hydro pneumatic accumulator

Special features for flexible cutterbars:	
Cutting width-m/ft	3,90/13 4,20/14 4,80/16 5,10/17 5,80/19
Optional Automatic Table	
Height control A.T.H.C.	
Cutting height indicator	Standard
390 mm-distance between auger and knives	

Special features for rigid cutting tables:	
Cutting width-m/ft	4,20/14-4,65/15,5
Rigid table bottom and cutterbar	
325-mm distance between auger and knife.	
Stone protection guard	Standard

BRAKES	
Type	Independent disc

WEIGHT	
Without table	7740 kgs
14 ft flexible table	1230 kgs

OPERATOR'S ENVIRONMENT		
Steering		Hydrostatic
Steering column		Adjustable
Operator seat	De-luxe fully adjustable	
Air compressor		Standard
Sun capony		Standard

CORN HEADERS		
Rows	MF	Row width-mm
4	1144	914-965-1016
5	1153	711-762
5	1154	914-1016
6	1163	711-762

MF corn headers have low profile sheet metal designed to handle down tugged crops. The header auger diameter are 127mm and the flights are 127mm high. The gathering snouts and dividers are floating and the fluted steel stalk rolls have hardened edges fitted with sharpened steel vine knives.

VARIABLE EQUIPMENT	
* Spike tooth cylinder and concave for rice cropping	
* Straw chopper	
* 6 or 7 roller tracks for soft ground conditions	
* Slow speed cylinder kit (171/290 rpm) for edible beans	
* Sunflower kit	
* Round hole sieves	
* Table trailer	
* Reel hydraulic fore and aft adjustment	
* 145 Turbo Engine.	
* A.T.H.C.	



Specifications are subject to change without notice and may vary from country to country. Please check with your Distributor or Dealer at the time of placing your order.